



# GOVERNANCE STRUCTURE

Together we belong, believe, become

# Governance Structure

## Members

Malcolm Wilford, Andy Bacon, Marion Sweet  
Members meet twice p.a.

## Board of Trustees

Chair of Board: Nicholas Adams-Nel | Vice Chair: Jon Gibson  
Chief Executive Officer (Ex-officio): Jane Coley  
Nathan Coombs, Euan Black, Carolyn Cameron, Peter Sharp, Ellie Dickins, Simon Williams  
Clerk to Trust Board – Charlotte Mercer



### FINANCE, AUDIT & RISK COMMITTEE

#### TOR

Academy Budgets, Finance, Statutory Reporting, Premises, Catering, ICT, H&S

#### Chair

E, Black  
N. Coombs  
S. Williams  
P.Sharp

#### Attendees

CEO, CCO



### STANDARDS COMMITTEE

#### TOR

Safeguarding, Teaching & Learning, Staffing, HR.

#### Chair

P. Sharp,  
E. Dickins, J. Gibson, N. Adams-Nel

#### Attendees

CEO, Head of Data and Impact, Pedagogy Lead, Education Directors (Primary/Secondary)

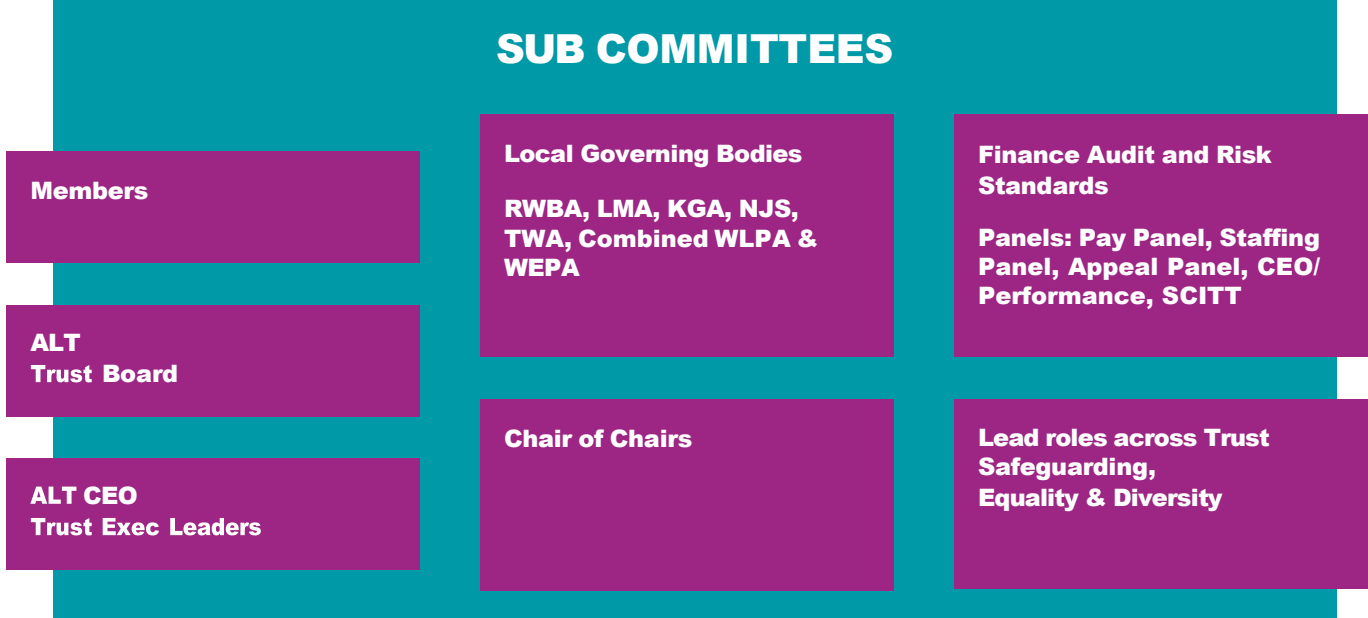


### LOCAL GOVERNING BODIES

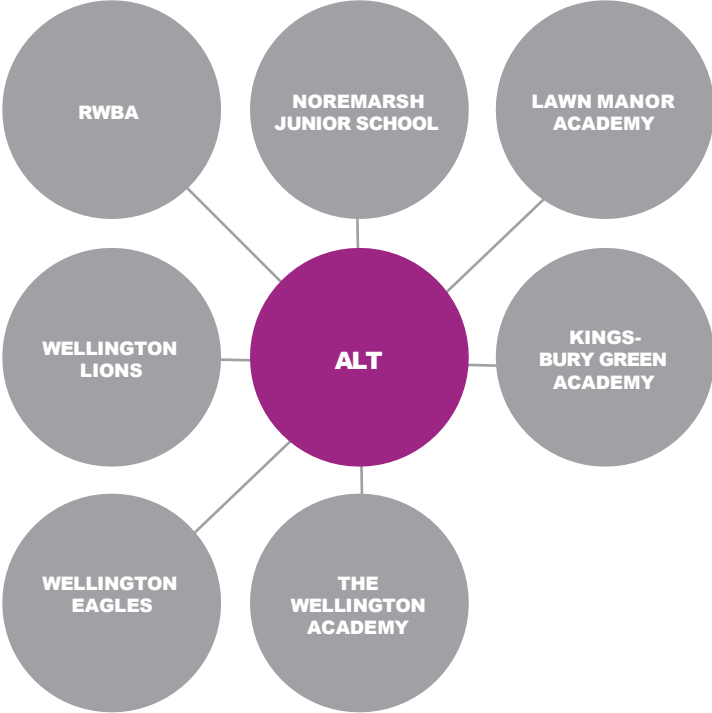
LMA,  
KGA  
RWBA,  
NJS,  
TWA,

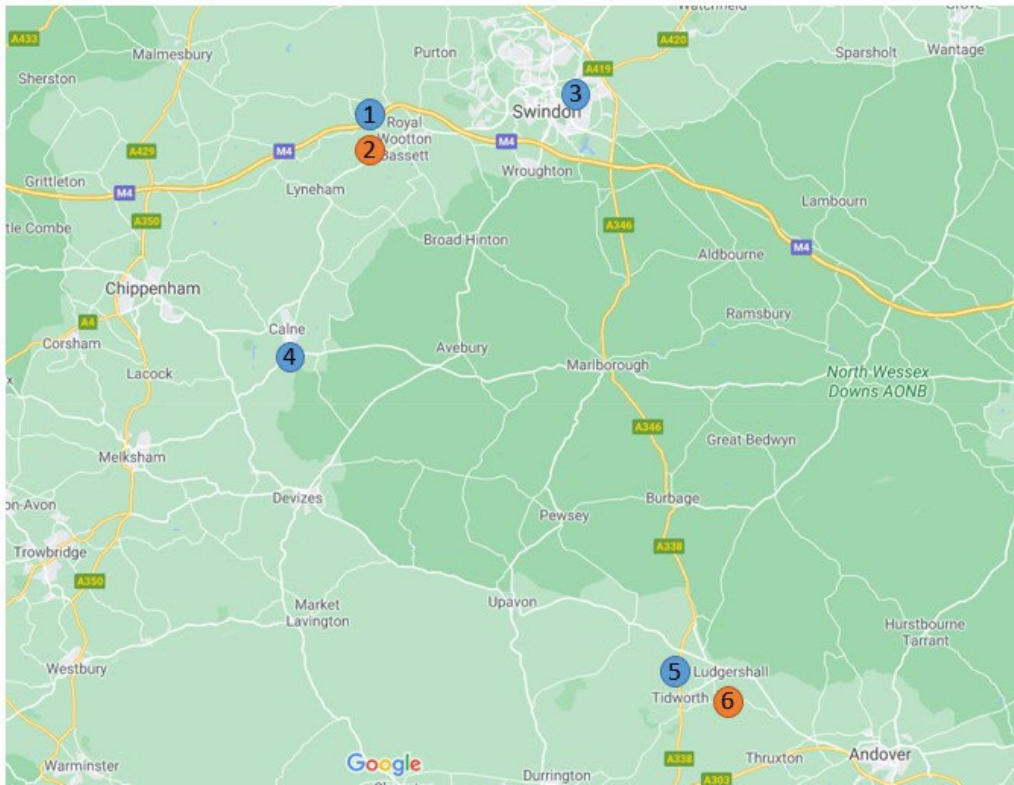
Combined LGB for WLPA & WEPA

# Finance Audit and Risk, Standards



# Primary & Secondary Academies





- 1 Royal Wootton Bassett Academy
  - 2 Noremarsh Junior School
  - 3 Lawn Manor Academy
  - 4 Kingsbury Green Academy
  - 5 The Wellington Academy
  - 6 Wellington Lions Primary Academy & Wellington Eagles Primary and Nursery
- Key:**
- Secondary Academies
  - Junior and Primary Academies